

CANOLFAN TYWI



TYWI CENTRE

Building Defects

Case study
Activity 1



Building Defects

- Follow instructions on each page to navigate your way through this activity
- Along the bottom of each page is a navigation bar- click on these links to take you to the part of the building that you want to know more about at any time (click the links rather than scroll if you can!)
- Some pages have small images- click on these images for a closer look at the building.
- At the end of the activity, you will be asked compile a short report that covers the condition of :
 - The roof
 - The gutters and downpipes
 - The Walls
 - The windows (doors were not included as they weren't visible beneath the foliage).
 - And the overall condition of the building
- Use the questions and prompts to help you make an assessment of the building
- Remember to make a note of your findings as you work through the slides.



OVERVIEW OF THE BUILDING

Click the image below for details of the North side



Click on the image below for details of the South side



What are your first impressions of the building's condition?

- Would you say that it is in:
 - Very good condition?
 - Reasonable good condition?
 - Poor condition?
 - Very poor/ dangerous condition?
- What do you think the occupancy is?
 - Occupied/ in use
 - Part in use
 - Not in use/ vacant
 - Not sure
- Are there any clues as to the age of the building?
- Would you assume that it was listed?
- Can you suggest what the building may have been used for in the past?



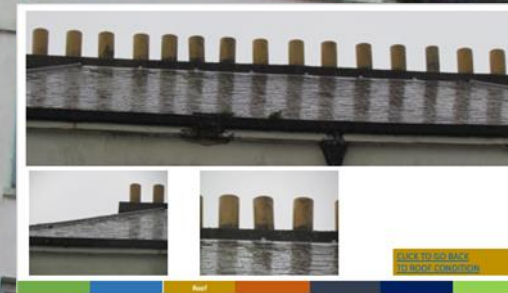
ROOF

Using the images provided- what is your assessment on the condition of the roof?

What materials do you think the roof is made of?

Can you identify any signs of decay or defects?

Click on the image below to view more detailed images of the roof



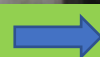
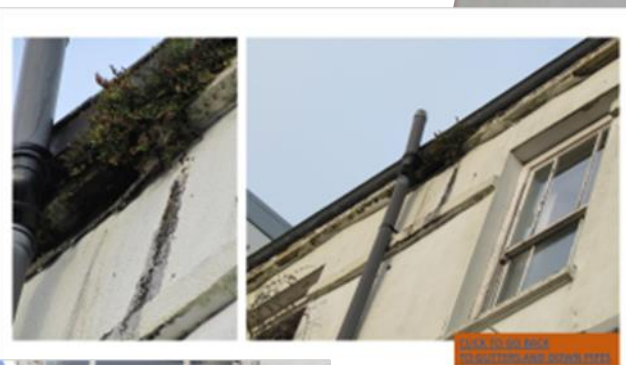
GUTTERS AND DOWNPIPES

- What is the condition of the gutters and downpipes?
- What materials are they made from?
- Can you see any evidence of :
 - Leaks
 - Vegetations growth
 - Damp walls
 - Broken or missing parts
 - Blocked or missing drains?
- What affect are these defects likely to have on the building?



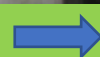
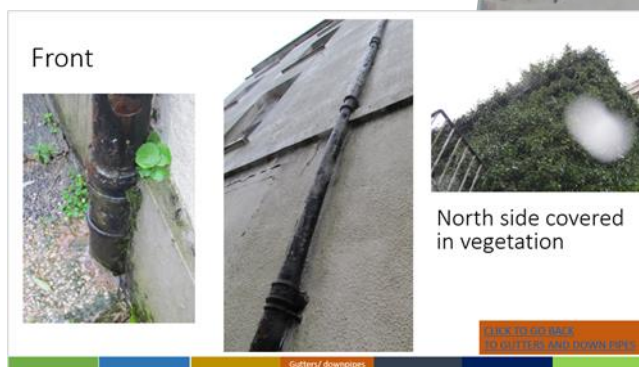
GUTTERS AND DOWNPIPES

Click on the images for detailed view of South side of the building



GUTTERS AND DOWNPIPES

Click on the image for detailed view of front and north side of the building



WALLS

- What can the walls tell you about the condition of the building?
- Are there any cracks?
- Are there patches of missing Render?
- Is there vegetation growing in the masonry?
- Is there any peeling paint?

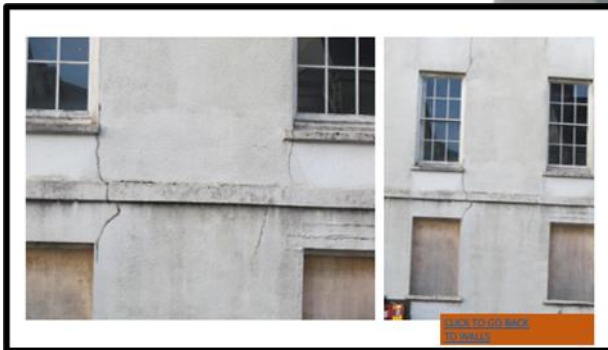


WALLS

Click image below for detailed view of South side of the building



Click image for detailed view of front of the building



Click image above for detailed view of North of the building

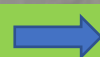
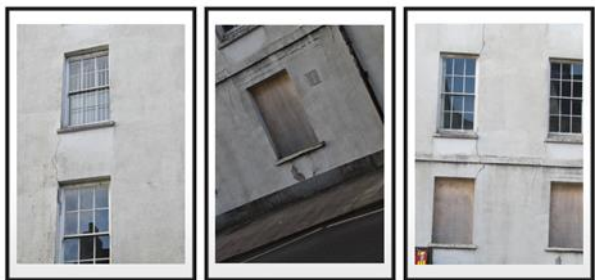
WINDOWS

- What materials are the windows made from?
- What condition are they in?
- Are there any windows missing?
- Is the glass broken?
- Are the windows secured?
- What condition is the timber in? Is there any sign of rot?
- What condition is the paint in? Is it peeling?



WINDOWS

Click on the images
for detailed view of
the windows



Summary

- Now that you have had seen the external features of the building, compile a short report that covers the condition of :
 - The roof
 - The gutters and downpipes
 - The Walls
 - The windows (doors were not included as they weren't visible beneath the foliage).
 - And the overall condition of the building
- We will then discuss your assessment when we reconvene as a full group
- If you have some time spare, why not take a look at the listing description for the building by clicking here:

<http://cadwpublic-api.azurewebsites.net/reports/listedbuilding/FullReport?lang=en&id=9605>



[CLICK TO GO BACK
TO GUTTERS AND DOWN PIPES](#)



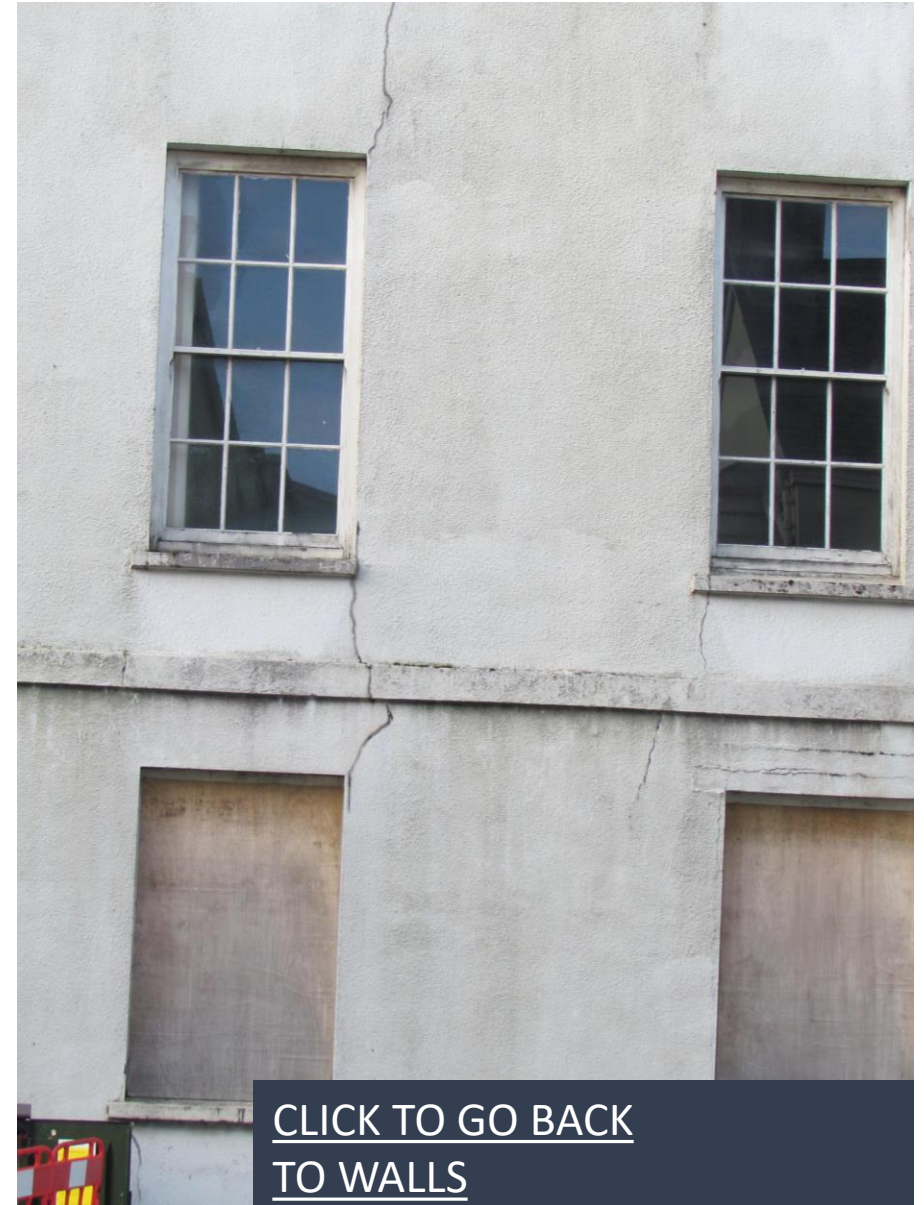
[CLICK TO GO BACK
TO GUTTERS AND DOWN PIPES](#)

Front



North side covered
in vegetation

[CLICK TO GO BACK
TO GUTTERS AND DOWN PIPES](#)





[CLICK TO GO BACK
TO WALLS](#)



[CLICK TO GO BACK
TO WALLS](#)



[Click to go back to overview](#)



[Click to go back to overview](#)

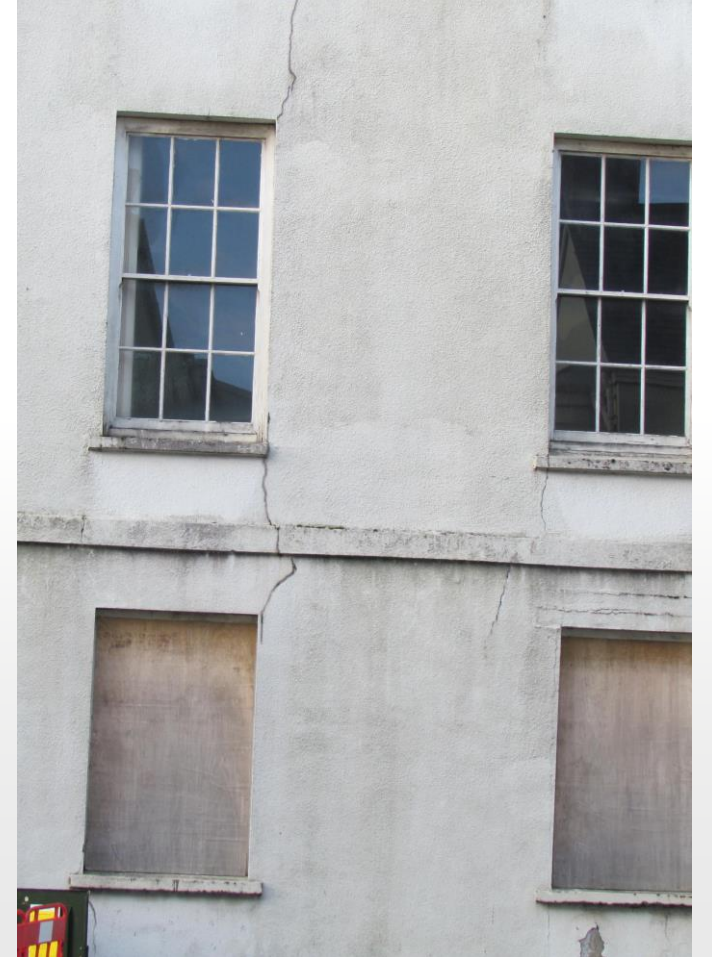




[CLICK TO GO BACK
TO ROOF CONDITION](#)



[Click to return to windows](#)



[Click to return to windows](#)

Windows



Click [to](#) return to windows