



WELSH TRADITIONAL BUILDINGS FORUM

FFORWM ADEILADAU TRADDODIADOL CYMRU

Level 3 Award

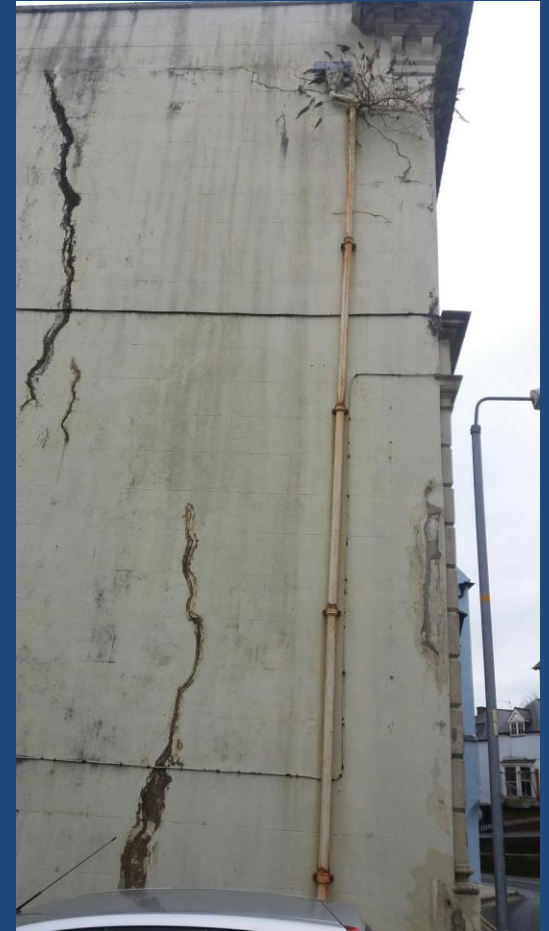
Energy Efficiency Measures in Older
and Traditional Buildings

Dyfarniad Lefel 3

Mesurau Effeithlonrwydd Ynni ar
gyfer Adeiladau Hŷn a
Thraddodiadol

Defects – Implications for Energy Efficiency Measures

Defects – Cracks in masonry



Defects – Cracks in masonry



Defects – chimneys



Defects – chimneys



Defects – Roofs



Defects – Roofs



Defects – Rainwater goods



Defects – Rainwater goods



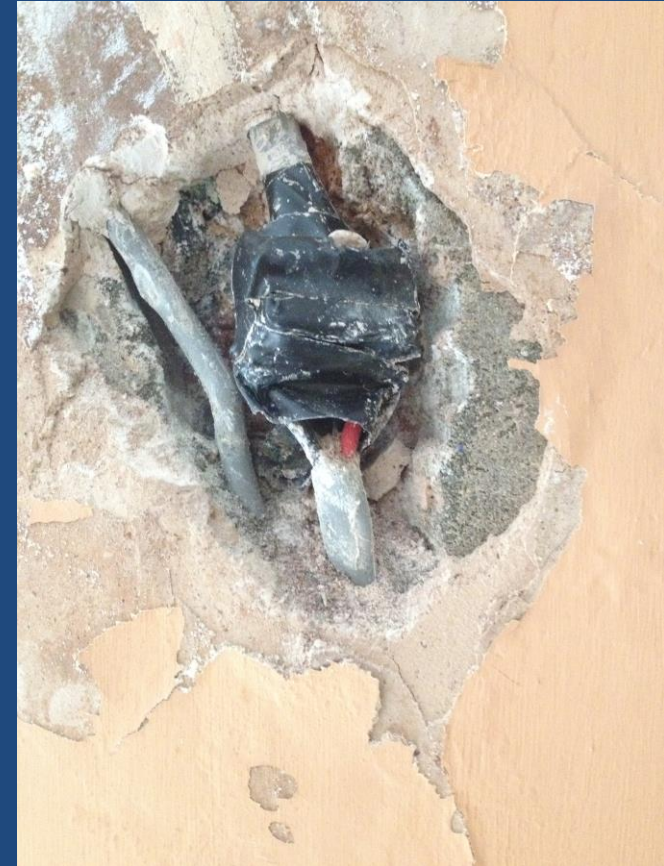
Defects – Inappropriate repairs



Defects – Inappropriate repairs



Defects – poor workmanship



WELSH TRADITIONAL BUILDINGS FORUM

FFORWM ADEILADAU TRADDODIADOL CYMRU

The Welsh Traditional Buildings Forum promotes the development of traditional building skills and sustainability issues relating to all old buildings across Wales.

Thank you to the CITB for funding the Heritage Construction in Wales project, and the Wales Cultural Recovery Fund for funding the final stages of the project. This funding enabled this information to be made available to all those wishing to learn about the appropriate energy efficiency measures for older and traditional buildings.

For further information contact:

<https://www.wtbf.co.uk/>

Mae Fforwm Adeiladau Traddodiadol Cymru yn hyrwyddo datblygiad sgiliau adeiladu traddodiadol a materion cynaliadwyedd sy'n ymwneud â phob hen adeilad ledled Cymru.

Diolch i'r CITB am ariannu'r prosiect Adeiladu Treftadaeth yng Nghymru, a Chronfa Adfer Diwylliannol Cymru am ariannu camau olaf y prosiect. Fe wnaeth yr arian hwn alluogi'r wybodaeth hon i fod ar gael i bawb sy'n dymuno dysgu am y mesurau effeithlonrwydd ynni priodol ar gyfer adeiladau hŷn a thraddodiadol.

Am wybodaeth bellach cysylltwch â:

<https://www.wtbf.co.uk/>